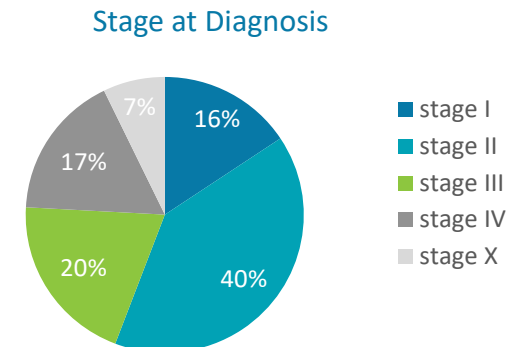
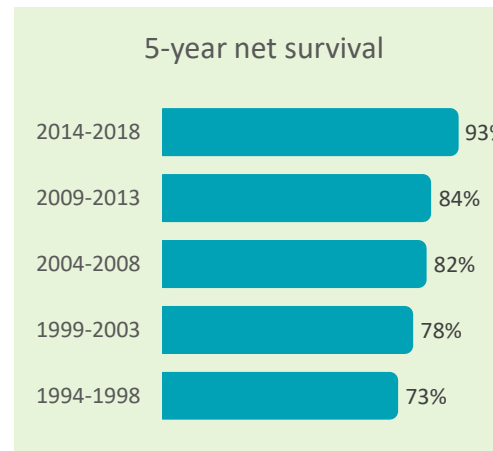
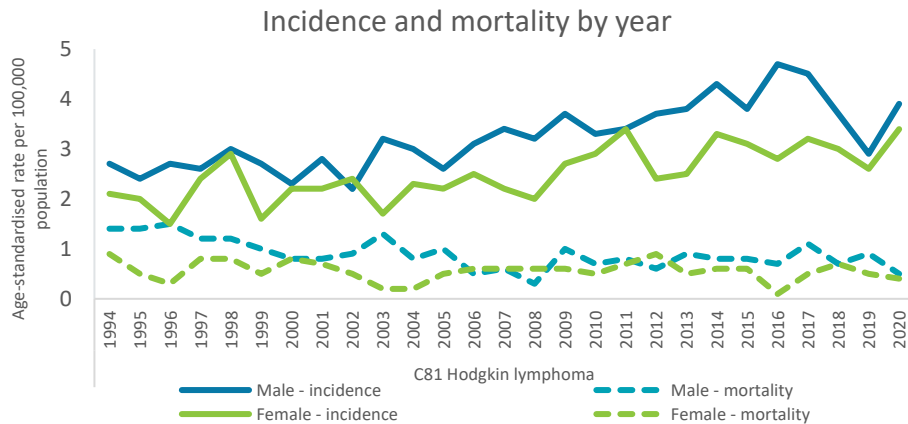
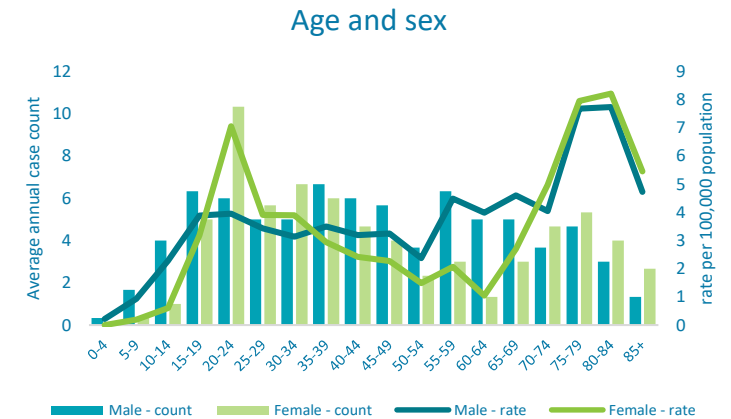


# Cancer Factsheet

## Hodgkin lymphoma (ICD-10 C81)

New cases 2018-2020	Female	Male	Total
Number of new cases per year C81 Hodgkin lymphoma	70	79	149
Incidence rate (cases per 100,000 per year)	3	3.5	3.3
Cumulative lifetime risk of diagnosis	1 in 376	1 in 355	1 in 365
Percentage of all invasive cancers (excl NMSC)	0.6%	0.6%	0.6%
Ranking among most common invasive cancers (excl NMSC)	21	18	23
Median age at diagnosis (years)	40.5	44	42
Deaths 2018-2020			
Number of deaths per year C81 Hodgkin lymphoma	10	12	22
Mortality rate (deaths per 100,000 per year)	0.5	0.7	0.6
Cumulative risk of death to age 75 years	1 in 6150	1 in 3872	1 in 4764
Percentage of all invasive cancer deaths (excl NMSC)	0.2%	0.2%	0.2%
Ranking among most common invasive cancer deaths (excl NMSC)	-	-	-
Median age at death (years)	77.5	74	77



For further information please visit [www.ncri.ie](http://www.ncri.ie)

Incidence rates age standardised using 2013 European population. Data presented refer to cases diagnosed 2018-2020 unless otherwise specified. Data on stage relates to cases diagnosed 2014-2018.